



CURBED INSIDE

Sneak Peek at Renovated Skidmore House: Porches! Backsplashes!



CURBED MARKETPLACE

410 Central Park West, Upper West Side, The Corcoran Group, \$1,295,000



CURBED MARKETPLACE

Beach 143rd St, The Rockaways, Elliman, \$625,000



CURBED NY
24 new posts

CURBED NATIONAL
15 new posts

CURBED CHICAGO
6 new posts

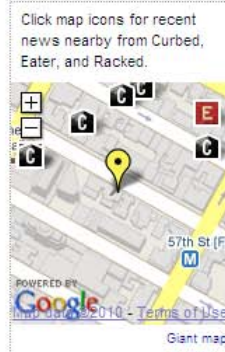
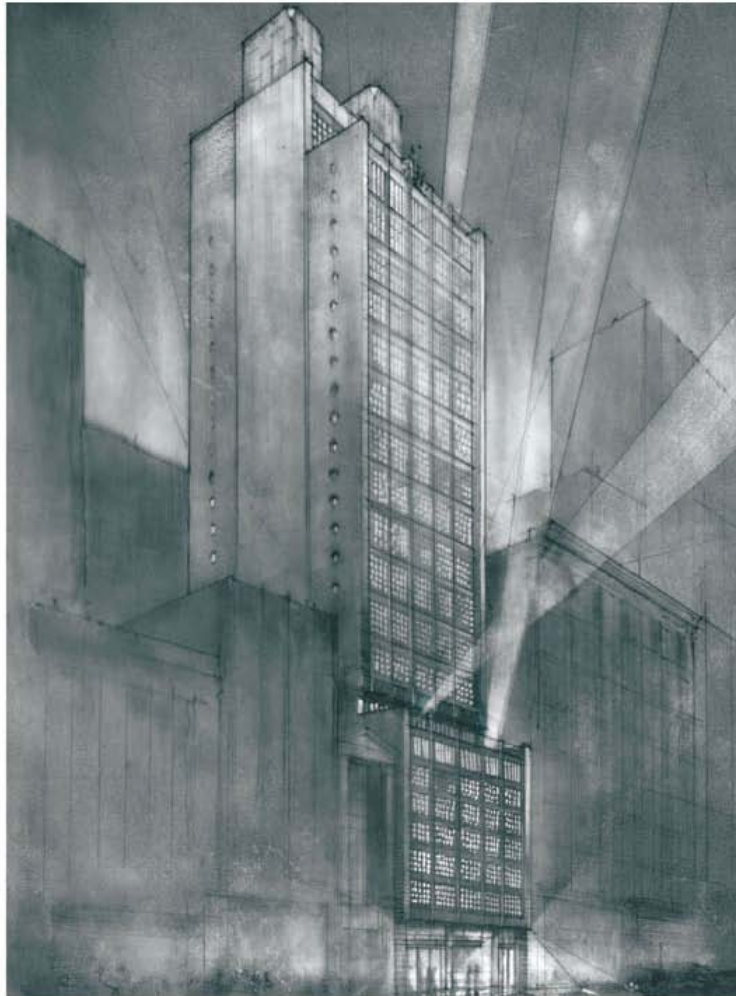
EATER NY
19 new posts

MARKETPLACE
784 new listings

MINDBOGGLING REVEALS

Roman & Williams Take On Midtown With New 30-Story Hotel

Thursday, September 16, 2010, by Joey



NEW ROMAN & WILLIAMS HOTEL
120 West 57th Street, New York, NY

- Midtown/Midtown West
 - 120 West 57th Street
 - Architecture
 - Ark Partners
 - Gene Kaufman
 - Mindboggling Reveals
 - New Roman & Williams Hotel
 - Roman And Williams
 - Top
 - Willow Hotels
- Comment now

Like 10

Roman & Williams, the upstart interior design firm (the Standard Hotel, the Ace Hotel, Gwyneth Paltrow's place) co-founded by Hollywood set designers Robin Standerfer and Stephen Alesch, has deftly avoided backlash from the preservation crowd. When they designed their first ground-up building, in history-rich Nolita, R&W came up with a building that managed to blend in beautifully with 150-year-old tenements while still looking new and fresh. But 211 Elizabeth was a runt compared to **120 West 57th Street**, the firm's just-announced **30-story hotel** in Midtown, and there will no doubt be some lingering hard feelings over what had to die so that this blockbuster could live.

The former 120 West 57th Street (right) was the longtime home of the **Jewish Board of Family and Children's Services**, which went into contract to sell the building in 2007. Demolition work began on the 12-story building, designed by Harry B. Mulliken and built in 1903 (but later altered), to some moaning and



13

Tweet

Subn

65 TOTAL SHARES

13

Tweet

Subn

65 TOTAL SHARES

SIGN UP FOR OUR NEWSLETTER

Your email here

American Apparel®

Stores in NYC:

- Lower East Side
- Chelsea
- Flatiron
- Upper East Side
- Upper West Side
- West Village
- Harlem
- Brooklyn
- and more!

Text AASTORE + zip code to 23000 to find our nearest location.



FOLLOW US

Curbed on Facebook

Like

2,550 people like Curbed



CURBED TIPLINE

tips@curbed.com

NEWS BY NEIGHBORHOOD

MANHATTAN

- Chelsea
- Chinatown
- East Harlem

groaning, but nothing like what accompanied the razing of the Drake Hotel a few blocks east. The new hotel on the site, slated to **open in 2013**, will be a 130,000-square-foot building with a lobby restaurant and bar, 250 rooms and 46 suites. And yep, it's right next to the 57th Street entrance of Le Parker Meridien. Careful when popping in for a burger during construction.



The hotel is being developed by [Ark Partners](#), which owns and operates a handful of New York City hotels under its [Willow Hotels](#) subsidiary. The first rendering is still a little bit draped in mystery, but it does remind us of Tribeca's [Artisan Lofts](#) condo conversion, another Roman & Williams design project. The architect-of-record for the hotel will be, brace, **Gene Kaufman** (as in [The Gene Kaufman](#)), but if he [knows what's good for him](#), he won't claim credit for the finished product.

Here's the portion of the press release dealing with the design:

Roman and Williams has designed a building whose disciplined and reductive architecture gives it structure and clarity when viewed from afar and from the street. The façade is defined by two muscular shoulders – made of **iron-spot black brick** – that define, frame and ground the building's front elevation. Glazed black brick and metal windows – muntined to **create the feeling of a beautiful lantern when lit from within** – comprise the bulk of the façade. These windows will relate the new hotel to much of the traditional, iconic architecture in the neighborhood.

Guest room and public area designs will feature rich woods, understated yet grand décor elements, and a nod to Mid-Century-Modern design. The material palette is restrained, earthy and sensual in the common areas of the hotel, and guest rooms have a functionality and airiness of a loft with simple, functional and well-detailed furnishings.

The **bathrooms are inspired by those in classic 1930s New York apartment buildings**, with marble and tile detailing and custom fittings. With floor-to-ceiling windows, outdoor terraces, soaring high ceilings, sweeping views of Central Park from upper floors and a restaurant and bar under the helm of a to-be-announced noteworthy and acclaimed restaurateur, the new hotel will emerge at the forefront of bespoke upscale hotels in Manhattan.

East Village
FiDi/Battery Park City
Flatiron District
Gramercy & Stuy Town
Greenwich Village
Harlem/M'side Heights
Hell's Kitchen/Clinton
Hudson Square
Inwood/Wash. Heights
Lower East Side
Meatpacking District
Midtown East/Kips Bay
Midtown/Midtown West
Murray Hill
Noho/Central Village
NoIta
Roosevelt Island
Soho
Tribeca
Union Square
Upper East Side
Upper West Side
West Chelsea
West Village

BROOKLYN

QUEENS

Monthly Archives

Select month...

All archives

HEADLINES FROM OUR PARTNERS

THE NEW YORK OBSERVER

[Can Walgreens Cure Harlem's Scurvy?](#)

[3 Columbus Circle: Luxurious or Lipstick on a Pig?](#)

[Mizrahi Adds \\$3.5 M. Pad to](#)